




**KU EXTENDED**



**13.75-14.5 GHz**



**40/50 WATT**



**GUARANTEED**  
**2 YEARS**  
**GUARANTEED**

**BUC 40/50/ KUE**  
KU BAND BLOCK-UP-CONVERTER

# BUC 40/50 / KUE 13.75-14.5 GHz

# KU BAND BLOCK-UP-CONVERTER

## Technical Specification

### RF Specifications

	Output (Ghz)	Input (Ghz)	Low (Ghz)
Standard	14.00 to 14.50	950 to 1450	13.05 (*)
Offset	13.75 to 14.25	950 to 1450	12.80 (*)
Extended	13.75 to 14.50	950 to 1700	12.80 (*) (* switchable)
Output Power	46 dBm (40 W), 47 dBm (50W)		
Small Signal Gain	70 dB Min		
Gain Flatness	±0.5 dB Max (40 Mhz BW)		
Gain Variations	±1.5 dB over the operating temperature range		
Inter modulation	-30 dBc @ Relative to combine power of two carriers at 6 dB total power backoff from Rated Output power		
O/P spurious	-55 dB Max		
Phase Noise 100 Hz	< -65 dBc/Hz		
Phase Noise 1 KHz	< -75 dBc/Hz		
Phase Noise 10 KHz	< -85 dBc/Hz		
Phase Noise 100 KHz	< -100 dBc/Hz > 100 kHz		
Input Return Loss	> -15 dB		

## DC Power

Prime Power	36-70 VDC (48 V nominal)
Power Consumption	500W at 110/220 VAC

## Interfaces

IF Input Interface	50 Ohms N-type / 75 Ohms - F type field replaceable
Output Interface	WR 75

## External Reference

Frequency	10 MHz sine wave
Ref Input Level	-5 dBm to +5 dBm
<b>External reference phase noise requirement @ frequency offset</b>	
10 Hz	-120 dBc/Hz
10 KHz	-150 dBc/Hz
Ref stability	±1x 10E-7 (minum requirement)

## Monitor & Control

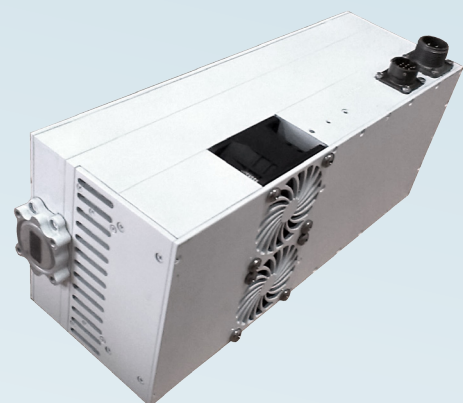
Monitor	BUC temperature Status alarm RF output power (optional) LED status indication
Control	Remote LO (manual or via M&C) Attenuation RF output mute
Interface	RS232/RS485 via external MS connector

## Environmental

Operating Temperature	-40° C to +55° C
Relative Humidity	Up to 98%

## Mechanical

Size	120 L (140 with connectors on side wall) x 110 W x 300 H mm
Weight	5 kg / 11.02 lbs
Color	White Powder Coat



Grabenweg 68  
A-6020 Innsbruck // Austria  
www.spacedynamics.com

t. +43 720 512 382  
f. +43 720 512 383  
e. info@spacedynamics.com

Note: all specifications are subject to change without notice.  
Rev. BUC2530KUE111213

